

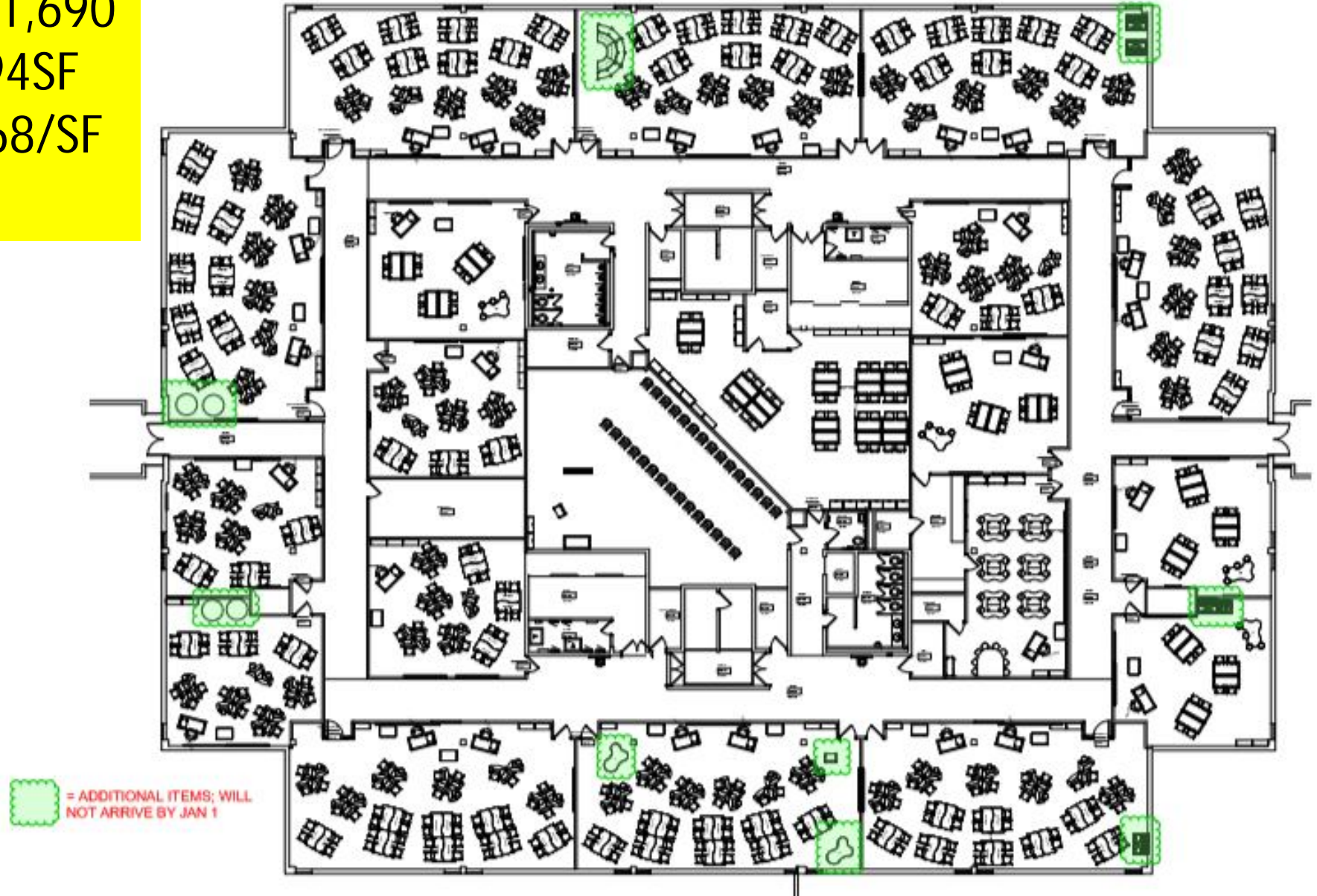
Complete



Coronado ES – Gym Floor
OZ – Colorado Floorworks

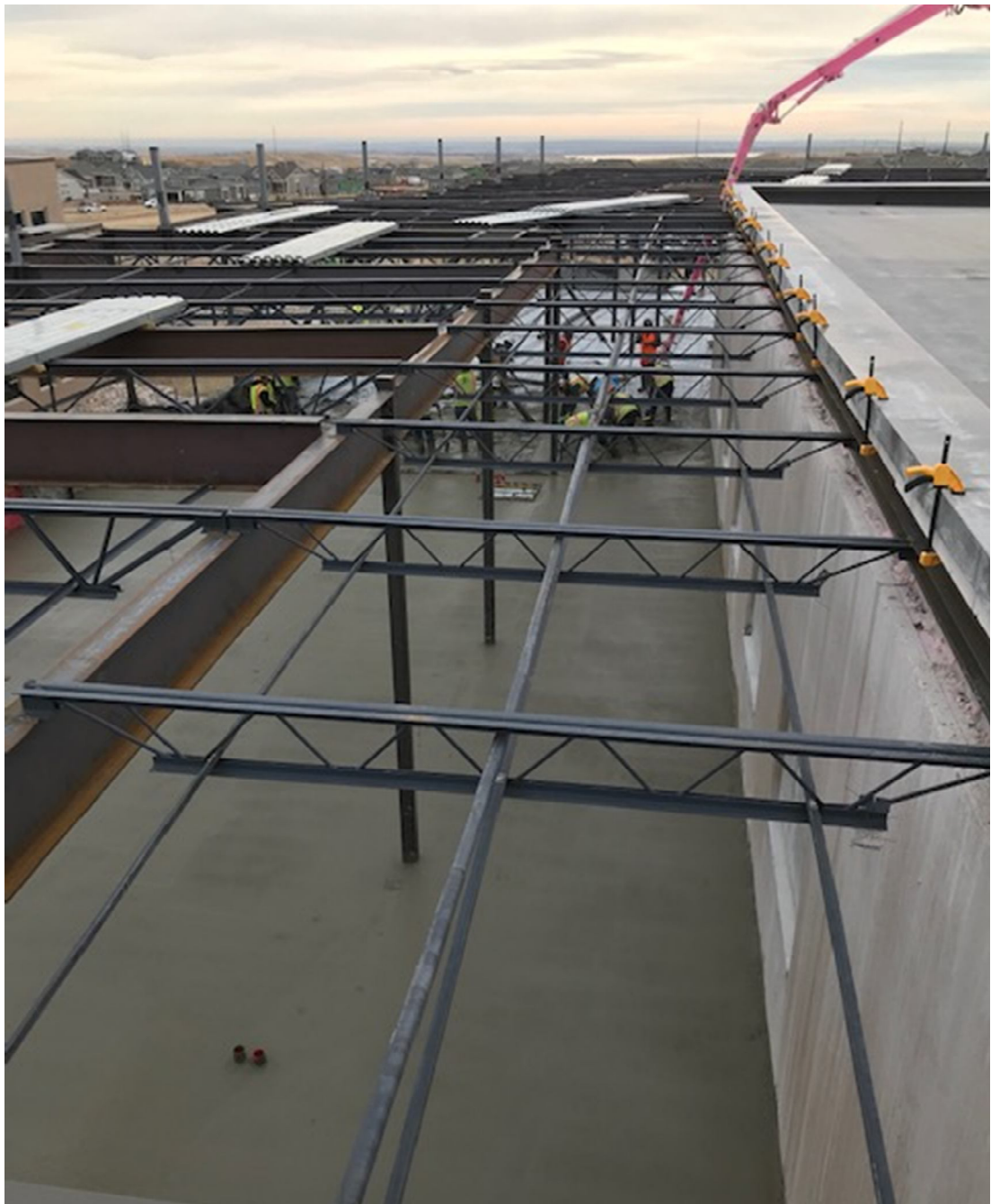
Construction
\$12,971,690
49,194SF
\$263.68/SF

Complete – Phase I



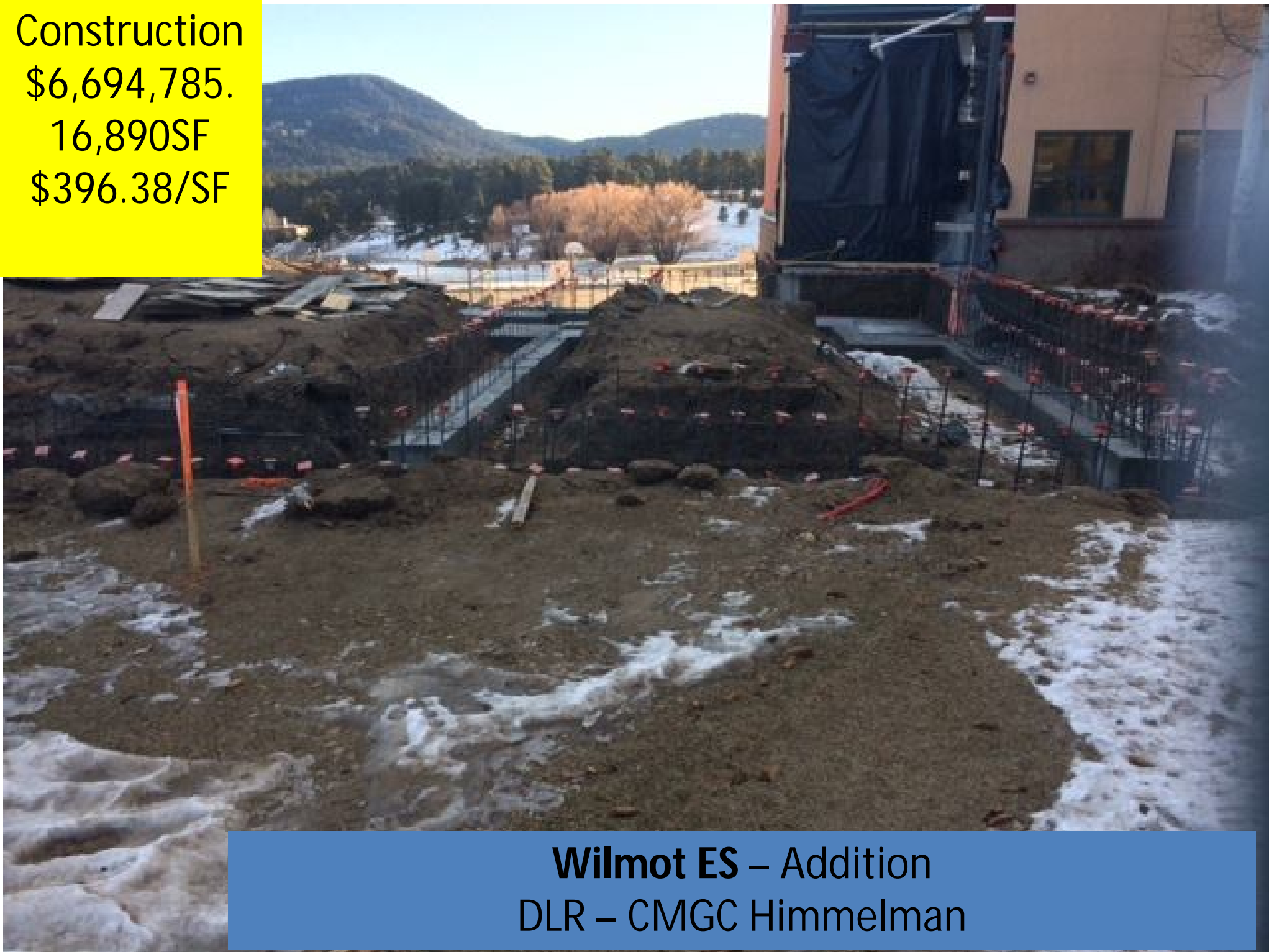
Arvada HS – Addition – (Phase I - 3rd Floor Renovation)
HCM – CMGC Saunders

Construction
\$4,589,755
15,137SF
\$303.21/SF



**Three Creeks K8 – Addition –
HCM – Phipps**

Construction
\$6,694,785.
16,890SF
\$396.38/SF



Wilmot ES – Addition
DLR – CMGC Himmelman

Construction
\$16,736,000
58,537 SF
\$286/SF



SOUTHWEST CORNER



Kendrick Lakes ES – Replacement
Larson Incitti – Roche

Summer 2020 - 20 Efficiency Future Ready

Locationb	Artic		Description	A/E	Contractor
Hackberry Hill	Arvada	ES	Hackberry Hill ES Efficiency & Fut	RTA	
Fremont	Awest	ES	Fremont ES Efficiency & Future	Jordin	
Green Gables	Bear	ES	Green Gables ES Efficiency & Future	SyBazz	
Coronado	chat	ES	H Coronado ES Efficiency & Future Ready	OZ	
Columbine Hills	Columbine	ES	H Columbine Hills ES Efficiency & Future Ready	OZ	
Dutch Creek	Columbine	ES	Dutch Creek Eff Fut	Cunningham Group	
West Jefferson	Con	MS	H West Jefferson MS Efficiency & Future Ready	Cannon	FCI
Ralston	Gold	ES	H Ralston ES Eff & Future Ready	CRP	
Welchester	Gold	ES	Welchester ES Eff & Future Ready	CRP	
Foothills	Grn Mtn	ES	Foothills ES Efficiency & Future	CRP	
Hutchinson	Grn Mtn	ES	Hutchinson ES Efficiency & Future	SyBazz	
Belmar	lakewood	ES	Belmar ES Efficiency/Future + Paving	AMD	
Eiber	lakewood	ES	Eiber ES Efficiency & Future	AMD	
Adams	S lake	ES	H02500U01 - H Adams ES Efficiency & Future Ready	RB+B	
Semper	S lake	ES	Semper ES Efficiency & Future Read	RB+B	
Witt	S lake	ES	Witt ES Efficiency & Future Ready	RB+B	
Lukas	Slake	ES	Lukas ES Efficiency & Future Ready	RB+B	
Stober	W Ridge	ES	Stober ES Efficiency & Future Read	LOA	
Vivian	W Ridge	ES	Vivian ES Efficiency & Future Read	CRP	
Trailblazer Stadium			Trailblazer Stadium Efficiency & Future Ready	Mellin & Assoc	

Summer 2020 – 69 locations

Location		Program	Description	A/E
DW Field Improvements	DW		Pomona T&F, Standley Lake T&F , Golden T, Awest T Green Mountain T&F	HCM
DW Flooring	DW	Bond	Lasley 165,000, Fletcher Miller 160,000 & Fitzmorris, 160,000 Construction costs + 23.8% \$115,430 600430 Free Horizon added funded from	
DW Flooring II	DW		Allendale, Thompson, Fairmount	
DW LED	DW		18 Schools - Deane, Stott, Vanderhoof, Kullerstrand, Maple Grove, Columbine Hills, Westridge, Carmody, Devanny, Sheridan Green, Ryan, Lasley, Patterson, Fletcher Miller, Fitzmorris, Powderhorn, Dennison =134085+128100+210000+101142+105954+367710+120750+274419+127575+114983+128263+179130+225750+124436+121065+126525+122903 Add westgate Peck & Secrest	Ackerman
DW Mech	DW		3 ~ Schools - Stott \$185k Boiler,Ryan \$974k Boiler ahu controls, Patterson \$675k AHU Boiler,	Columbine
DW Paving	DW		3 Schools - Columbine Hills, Everitt MS, Lawrence	Dadey Engineering
DW Paving II	DW		3 schools Ryan , Mitchell + \$288,750 add Shelton +80,010	JVA
DW Playground	DW	Bond	- Allendale , Stott , Vanderhoof, Sheridan Green , Fletcher Miller, ,Westridge, Kendallvue, Dutch Creek, Stony Creek use \$ from	Design Concept
DW Roofing	DW		Green MT ES, Lasley ES, Patterson ES ,Parr ES CH used for lasley roof	WJE
DW Roofing II	DW	Bond	Kullerstrand \$265266, Carmody \$126521, Swanson \$154659, Little \$50511, Thompson 53390, Evergreen HS \$175222	Roof Tech SR-DK
DW Security Glass II	DW	Bond	11 Schools - Peck, Secrest, Thomson, Slater, Green Mtn ES, Kyffin, Mitchell, Shelton, Warder, Stevens, Wilmore Davis	In House

Summer 2020 – Bid Schedule – 2 Jan – 12 Feb – 9 Mar – 1 Apr

Location	Description	A/E	Contractor		Budget Range	Notes	Project Manager
Adams	H02500U01 - H Adams ES Efficiency & Future Ready	RB+B	Bid	####	\$2M to \$5M	Feb Bid	Sam Miller
Lukas	Lukas ES Efficiency & Future Ready	RB+B	Bid				
Semper	Semper ES Efficiency & Future Read	RB+B	Bid				
Witt	Witt ES Efficiency & Future Ready	RB+B	Bid				
Brady	H Brady Exploration School Efficiency & Future Ready (Elev -shaft exists - pit unknown eco space drive)	Alan Ford	Bid	####	\$1M to \$2M	March Bid	Sam Miller
DW Flooring II	Allendale, Thompson, Fairmount, West Woods (Gyms Spring Break)	EUA	Bid	####	\$250 to \$1M	Feb Bid	Hilary Porter
Green Gables	Green Gables ES Efficiency & Future - Hold on Freezer	SyBazz	Bid	####	\$2M to \$5M	March Bid	Hilary Porter
Hutchinson	Hutchinson ES Efficiency & Future	SyBazz	Bid				
DW Mech	Stott Boiler,Ryan Boiler ahu controls, Patterson AHU Boiler,	Columbine	Bid	####	\$1M to \$2M	1/13/20	Kimber Preece
Golden HS	Chiller Replacement	Columbine	Bid	####	\$250 to \$1M	Bid 12/12/19	Kimber Preece
Westridge - HVAC	Westridge	Branch Pattern	Bid	####	\$250 to \$1M	Feb Bid	Kimber Preece
Belmar	Belmar ES Efficiency/Future + Paving	AMD	Bid	####	\$1M to \$2M	Feb Bid	Margaret Anderson
Eiber	Eiber ES Efficiency & Future	AMD	Bid				
Columbine Hills	H Columbine Hills ES Efficiency & Future Ready	OZ	Bid	####	\$2M to \$5M	April 2 2020	Ed Huszcza
Coronado	H Coronado ES Efficiency & Future Ready	OZ	Bid				
DW Playground	- Allendale , Stott , Vanderhoof, Sheridan Green , Fletcher Miller, ,Westridge, Kendallvue, Dutch Creek, Stony Creek	Design Concept	Bid	####	\$1M to \$2M	Feb 18 2020	Bernadette Kelly
Fremont	Fremont ES Efficiency & Future	JordIn	Bid	####	\$250 to \$1M	Mar 10 2020	Bernadette Kelly
Trailblazer Stadium	Trailblazer Stadium Efficiency & Future Ready	Mellin & Assoc	Bid	####	\$2M to \$5M	Feb 5 2020	Bernadette Kelly
Hackberry Hill	Hackberry Hill ES Efficiency & Fut	RTA	Bid	####	\$250 to \$1M	March 2020	Danelle Berzoza
Arvada K8	H Arvada K8 Efficiency & Future Ready	RTA	Bid	####	\$1M to \$2M	March 2020	Danelle Berzoza
DW Flooring	Lasley , Fletcher Miller Fitzmorris, Free Horizon	Farnsworth Group	Bid	####	\$250 to \$1M	Feb 20 2020	Justin Watanabe
DW Roofing II	Kullerstrand	Roof Tech	Bid	####	\$250 to \$1M	Feb Bid	Justin Watanabe
DW Roofing II	Carmody	Roof Tech	Bid				
DW Roofing II	Evergreen HS	Roof Tech	Bid				
DW Roofing II	Swanson	SR-DK	Bid	####	\$250 to \$1M	Feb Bid	Justin Watanabe
DW Roofing II	Little	SR-DK	Bid				
DW Roofing II	Thompson	SR-DK	Bid				
Foothills	Foothills ES Efficiency & Future	CRP	Bid	####	\$2M to \$5M	3/19/20	Ted Hagan
Ralston	H Ralston ES Eff & Future Ready	CRP	Bid				
Vivian	Vivian ES Efficiency & Future Read plus playground	CRP	Bid				
Welchester	Welchester ES Eff & Future Ready -	CRP	Bid				
DW Paving	Paving Columbine Hills, Everitt MS, Lawrence	Dadey Engineering	Bid	####	\$250 to \$1M	Feb Bid	Bill Thaemert
DW Paving II	Paving Ryan, Mitchell Shelton	JVA	Bid	####	\$250 to \$1M	3/7/20	Doug Cooper
Stober	Stober ES Efficiency & Future Read	LOA	Bid	####	\$2M to \$5M	3/18/20	Doug Cooper
Dutch Creek	Dutch Creek Eff Fut	Cunningham Group	Bid	####	\$250 to \$1M	2/10/19	Troy Antill

Summer 2020 – Bids December

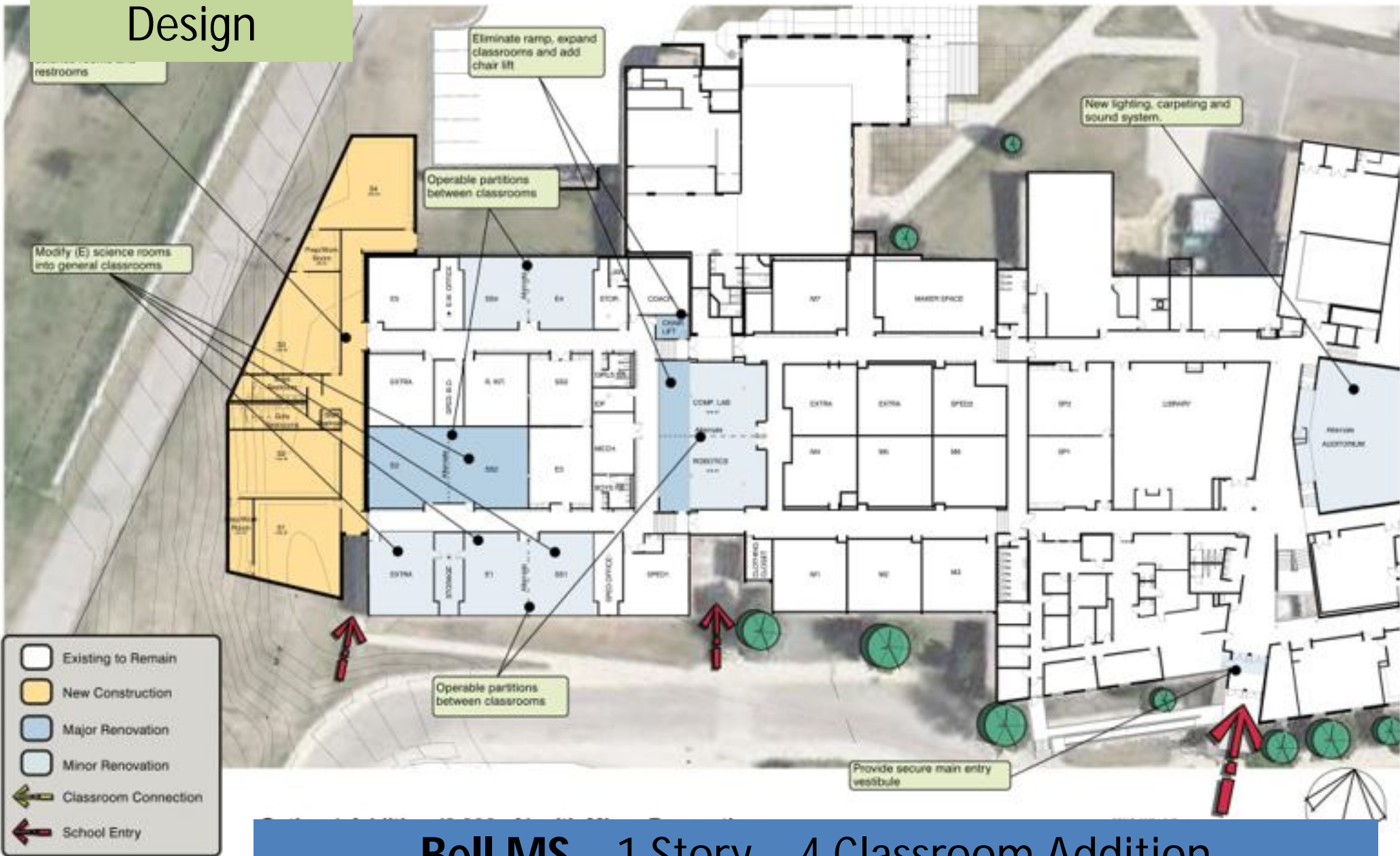
Location	Description	A/E	Contractor	Estimate	Variance	Bid	Notes	Project Manager
Golden HS	Chiller Replacement	Columbine	Bid	\$456,173.00	\$165,070.00	\$434,930.00	Bid 12/12/19	Kimber Preece
DW Roofing I	Patterson ES, Parr ES	WJE	United Materials Flynn	\$1,268,000.00	\$183,331.00	\$1,084,669.00	Bid 01/07/20	Troy Antill
DW Roofing I	Green Mountain ES	WJE	CMC	\$722,327.00	-\$16,923.00	\$739,250.00	Bid 12/10/19	Troy Antill
DW Roofing I	Lasley ES (Base Bid) A	WJE	United Materials	\$220,080.00	\$0.00	\$220,080.00	Bid 12/10/19	Troy Antill

10 – Additions

1 - New Facility

Location		Program		Description	A/E	Contractor
Arvada K8	K8	Bond	Addition	H Arvada K8 Efficiency & Future Ready	RTA	
Bell	MS	Bond	Addition	Bell MS Addition	EIDOS	
Brady	OPT	Bond	Addition	H Brady Exploration School Efficiency & Future Ready (Elev -shaft exists - pit unknown eco space drive)	Alan Ford	
Conifer	HS		Addition	Conifer HS	Cannon	FCI
CTE South	OPT		New Facility	WOTC - South	HCM	CMGC
Parmalee	ES	Bond	Addition	Parmalee ES Addition	OZ	
Foster	ES	Bond	Addition	H Foster ES Addition & General Upgrades	RTA	
Jefferson HS	HS	Bond	Addition	Jefferson HS	MOA	Haselden
Lumberg	ES	Bond	Addition	H Lumberg Efficiency & Future Ready	MOA	Haselden
Manning	OPT	Bond	Addition	Manning Addition	AMD	
Wayne Carle	MS	Bond	Addition	Wayne Carle MS Addition & General	RB+B	

Schematic Design



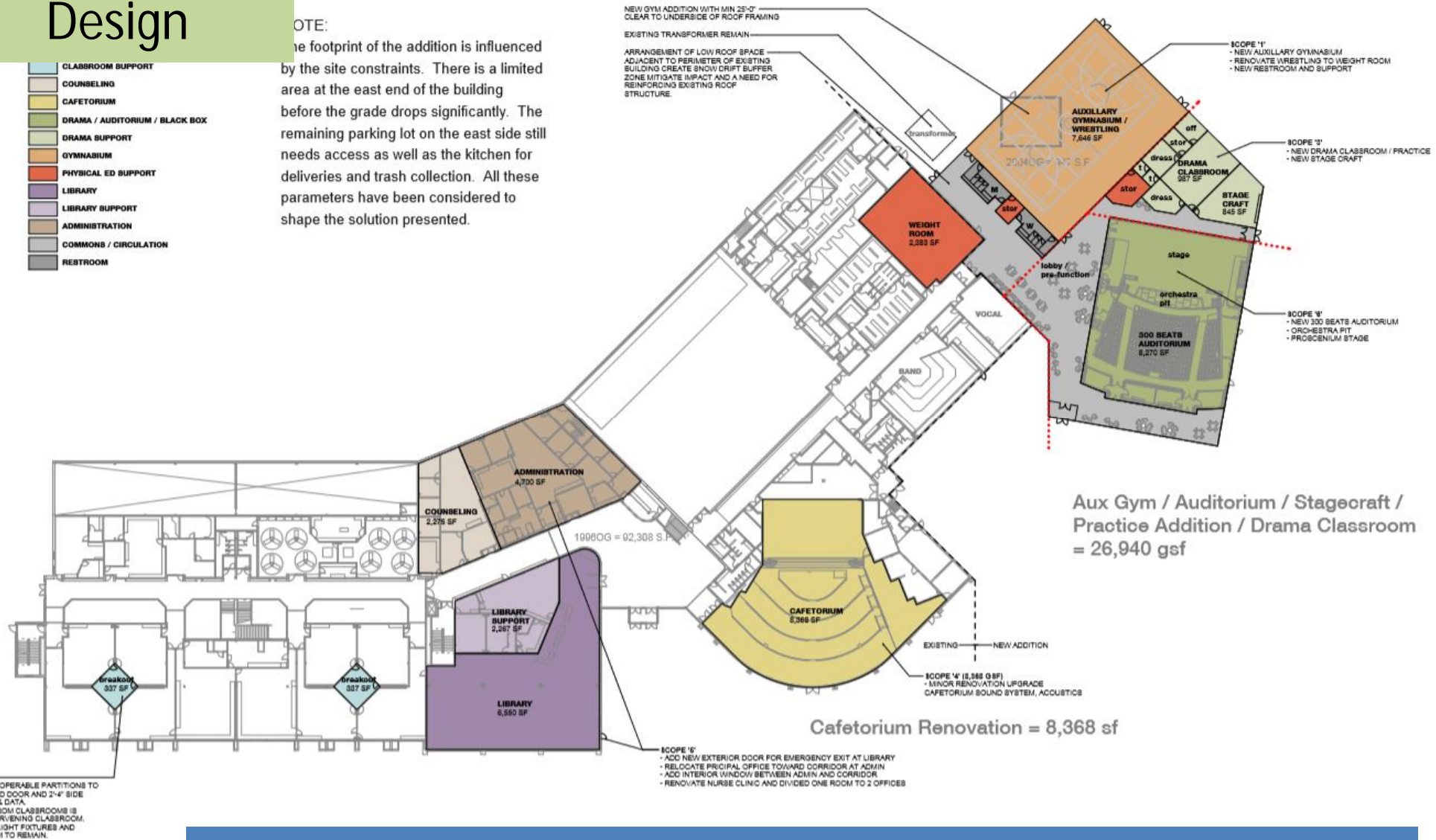
Bell MS – 1 Story - 4 Classroom Addition
Eidos – Contractor TBD

Schematic Design

NOTE:

The footprint of the addition is influenced by the site constraints. There is a limited area at the east end of the building before the grade drops significantly. The remaining parking lot on the east side still needs access as well as the kitchen for deliveries and trash collection. All these parameters have been considered to shape the solution presented.

- CLASSROOM SUPPORT
- COUNSELING
- CAFETERIUM
- DRAMA / AUDITORIUM / BLACK BOX
- DRAMA SUPPORT
- GYMNASIUM
- PHYSICAL ED SUPPORT
- LIBRARY
- LIBRARY SUPPORT
- ADMINISTRATION
- COMMONS / CIRCULATION
- RESTROOM



Conifer HS – Aux Gym Addition
with Auditorium Master Plan
Cannon – FCI

Schematic Design



CTE South – New Building
HCM – Contractor TBD

Schematic Design



Jefferson HS – Aux Gym Addition
MOA – Haselden

Schematic Design



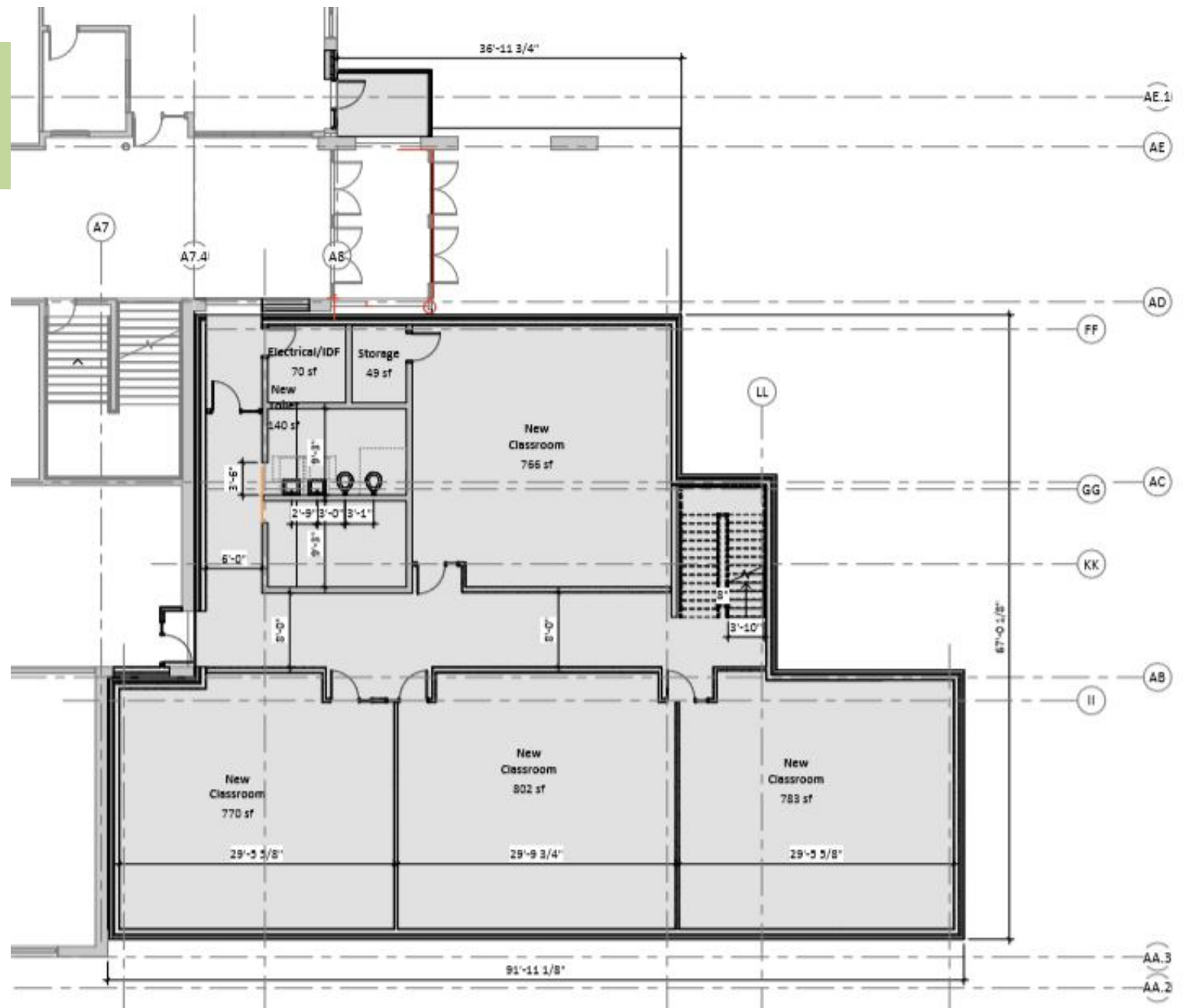
**Lumberg ES – 4 Classroom & Music Addition
MOA – Haselden**

Design Development



Manning Opt – 1 Story - 7 Classroom Addition
AMD – Contractor TBD

Schematic Design



Wayne Carle – 2 Story – 8 Classroom Addition
AMD – Contractor TBD

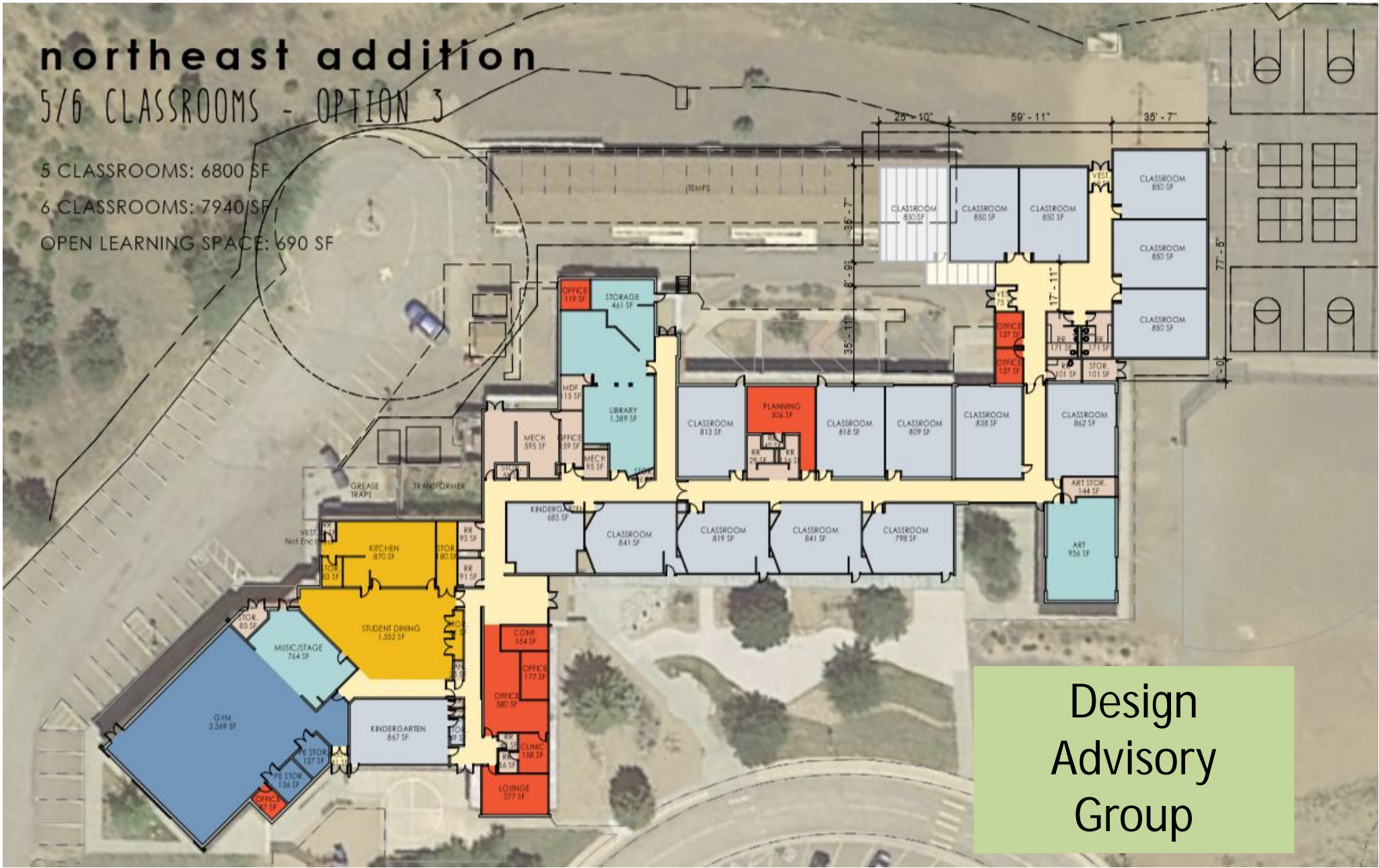
northeast addition

5/6 CLASSROOMS - OPTION 3

5 CLASSROOMS: 6800 SF

6 CLASSROOMS: 7940 SF

OPEN LEARNING SPACE: 690 SF



Design
Advisory
Group

Parmalee ES – 1 Story – 5/6 Classroom Addition
OZ – Contractor TBD

2019-20 Choice Reports By Articulation Area

Alameda

School	Students	Choice IN	% Choice IN
Alameda Intl Junior/Senior High	1,120	135	12.1%
Deane Elementary	414	175	42.3%
Emory Elementary	443	310	70.0%
Lasley Elementary	411	139	33.8%
Patterson Elementary	345	107	31.0%
Rose Stein International Elementary	233	88	37.8%
Grand Total	2,966	954	32.2%

School	Students	Choice OUT	% Choice OUT
Alameda Int'l Jr-Sr HS	1,931	946	49.0%
Deane ES	543	304	56.0%
Emory ES	472	339	71.8%
Lasley ES	497	225	45.3%
Patterson International School	415	177	42.7%
Rose Stein International ES	371	226	60.9%
Grand Total	4,229	2,217	52.4%

Arvada

School	Students	Choice IN	% Choice IN
Arvada High	772	106	13.7%
Arvada K-8	653	199	30.5%
Fitzmorris Elementary	168	77	45.8%
Foster Elementary	406	218	53.7%
Hackberry Hill Elementary	409	303	74.1%
Lawrence Elementary	261	128	49.0%
North Arvada Middle	602	207	34.4%
Peck Elementary	241	121	50.2%
Secrest Elementary	236	128	54.2%
Swanson Elementary	260	87	33.5%
Thomson Elementary	271	105	38.7%
Grand Total	4,279	1,679	39.2%

School	Students	Choice OUT	% Choice OUT
Arvada HS	1,511	845	55.9%
Arvada K-8	964	510	52.9%
Fitzmorris ES	254	163	64.2%
Foster ES	329	141	42.9%
Hackberry Hill ES	143	37	25.9%
Lawrence ES	295	162	54.9%
North Arvada MS	618	223	36.1%
Peck ES	297	177	59.6%
Secrest ES	221	113	51.1%
Swanson ES	455	282	62.0%
Thomson ES	316	150	47.5%
Grand Total	5,403	2,803	51.9%

Arvada West

School	Students	Choice IN	% Choice IN
Allendale Elementary	139	35	25.2%
Arvada West High	1,796	527	29.3%
Campbell Elementary	225	97	43.1%
Drake Middle	922	164	17.8%
Fairmount Elementary	621	62	10.0%
Fremont Elementary	196	88	44.9%
Stott Elementary	247	100	40.5%
Vanderhoof Elementary	414	114	27.5%
Grand Total	4,560	1,187	26.0%

School	Students	Choice OUT	% Choice OUT
Allendale ES	255	151	59.2%
Arvada West HS	1,719	450	26.2%
Campbell ES	269	141	52.4%
Drake MS	1,057	299	28.3%
Fairmount ES	709	150	21.2%
Fremont ES	302	194	64.2%
Stott ES	286	139	48.6%
Vanderhoof ES	517	217	42.0%
Grand Total	5,114	1,741	34.0%

Bear Creek

School	Students	Choice IN	% Choice IN
Bear Creek High	1,520	504	33.2%
Bear Creek K-8	1,007	642	66.0%
Carmody Middle	784	124	15.8%
Green Gables Elementary	210	96	45.7%
Kendallvue Elementary	299	114	38.1%
Kendrick Lakes Elementary	366	197	53.8%
Peiffer Elementary	236	75	31.8%
Red Rocks Elementary	288	171	59.4%
Westgate Elementary	436	117	26.8%
Grand Total	5,146	2,040	39.9%

School	Students	Choice OUT	% Choice OUT
Bear Creek HS	1,979	963	48.7%
Bear Creek K-8	607	242	42.2%
Carmody MS	1,478	818	55.3%
Green Gables ES	275	161	58.5%
Kendallvue ES	351	166	47.3%
Kendrick Lakes ES	330	161	48.8%
Peiffer ES	433	272	62.8%
Red Rocks ES	145	28	19.3%
Westgate ES	591	272	46.0%
Grand Total	6,189	3,083	50.1%

2019-20 Choice Reports By Articulation Area

Chatfield

School	Students	Choice IN	% Choice IN
Bradford K8 North	352	94	26.7%
Bradford K8 South	502	124	24.7%
Chatfield High	1,850	284	15.4%
Coronado Elementary	457	173	37.9%
Deer Creek Middle	751	367	48.9%
Falcon Bluffs Middle	663	75	11.3%
Mortensen Elementary	339	110	32.4%
Shaffer Elementary	486	102	21.0%
Stony Creek Elementary	345	92	26.7%
Ute Meadows Elementary	382	111	29.1%
Grand Total	6,127	1,532	25.0%

School	Students	Choice OUT	% Choice OUT
Bradford K-8 North	389	131	33.7%
Bradford K-8 South	420	42	10.0%
Chatfield HS	2,102	536	25.5%
Coronado ES	401	117	29.2%
Deer Creek MS	483	99	20.5%
Falcon Bluffs MS	779	191	24.5%
Mortensen ES	361	132	36.6%
Shaffer ES	515	131	25.4%
Stony Creek ES	413	160	38.7%
Ute Meadows ES	354	83	23.4%
Grand Total	6,217	1,622	26.1%

Columbine

School	Students	Choice IN	% Choice IN
Columbine High	1,748	675	38.6%
Columbine Hills Elementary	260	78	30.0%
Dutch Creek Elementary	255	29	11.4%
Governor's Ranch Elementary	356	131	36.8%
Ken Caryl Middle	878	202	23.0%
Leawood Elementary	323	92	28.5%
Normandy Elementary	363	137	37.7%
Grand Total	4,183	1,344	32.1%

School	Students	Choice OUT	% Choice OUT
Columbine HS	1,301	228	17.5%
Columbine Hills ES	311	129	41.5%
Dutch Creek ES	336	110	32.7%
Governor's Ranch ES	285	60	21.1%
Ken Caryl MS	867	191	22.0%
Leawood ES	366	135	36.9%
Normandy ES	333	107	32.1%
Grand Total	3,799	960	25.3%

Conifer

School	Students	Choice IN	% Choice IN
Conifer High	874	115	13.2%
Elk Creek Elementary	351	89	25.4%
Marshdale Elementary	314	47	15.0%
West Jefferson Elementary	232	56	24.1%
West Jefferson Middle	572	34	5.9%
Grand Total	2,343	341	14.6%

School	Students	Choice OUT	% Choice OUT
Conifer HS	909	150	16.5%
Elk Creek ES	318	56	17.6%
Marshdale ES	348	81	23.3%
West Jefferson ES	282	106	37.6%
West Jefferson MS	583	77	13.2%
Grand Total	2,440	470	19.3%

Dakota Ridge

School	Students	Choice IN	% Choice IN
Blue Heron Elementary	360	166	46.1%
Colorow Elementary	193	33	17.1%
Dakota Ridge High	1,434	536	37.4%
Mt. Carbon Elementary	375	102	27.2%
Powderhorn Elementary	541	107	19.8%
Summit Ridge Middle	1,019	299	29.3%
Westridge Elementary	435	230	52.9%
Grand Total	4,357	1,473	33.8%

School	Students	Choice OUT	% Choice OUT
Blue Heron ES	265	85	32.1%
Colorow ES	341	181	53.1%
Dakota Ridge HS	1,337	439	32.8%
Mount Carbon ES	392	119	30.4%
Powderhorn ES	544	110	20.2%
Summit Ridge MS	950	230	24.2%
Westridge ES	294	89	30.3%
Grand Total	4,123	1,253	30.4%

Evergreen

School	Students	Choice IN	% Choice IN
Bergen Meadow Primary	249	49	19.7%
Bergen Valley Intermediate	280	41	14.6%
Evergreen High	1,098	123	11.2%
Evergreen Middle	689	71	10.3%
Parmalee Elementary	313	143	45.7%
Wilmot Elementary	307	56	18.2%
Grand Total	2,936	483	16.5%

School	Students	Choice OUT	% Choice OUT
Bergen Meadow ES	279	79	28.3%
Bergen Valley ES	326	87	26.7%
Evergreen HS	1,084	109	10.1%
Evergreen MS	678	116	17.1%
Parmalee ES	219	49	22.4%
Wilmot ES	394	143	36.3%
Grand Total	2,980	583	19.6%

2019-20 Choice Reports By Articulation Area

Golden

School	Students	Choice IN	% Choice IN
Bell Middle	930	111	11.9%
Golden High	1,373	168	12.2%
Kyffin Elementary	433	204	47.1%
Mitchell Elementary	570	56	9.8%
Ralston Elementary	275	33	12.0%
Shelton Elementary	445	55	12.4%
Welchester Elementary	280	65	23.2%
Grand Total	4,306	692	16.1%

School	Students	Choice OUT	% Choice OUT
Bell MS	1,277	458	35.9%
Golden HS	1,605	503	31.3%
Kyffin ES	280	51	18.2%
Mitchell ES	610	111	18.2%
Ralston ES	311	69	22.2%
Shelton ES	592	202	34.1%
Welchester ES	414	199	48.1%
Grand Total	5,089	1,593	31.3%

Green Mountain

School	Students	Choice IN	% Choice IN
Deviny Elementary	475	208	43.8%
Dunstan Middle	940	210	22.3%
Foothills Elementary	261	72	27.6%
Green Mountain Elementary	228	105	46.1%
Green Mountain High	1,122	276	24.6%
Hutchinson Elementary	222	96	43.2%
Rooney Ranch Elementary	525	145	27.6%
Grand Total	3,773	1,112	29.5%

School	Students	Choice OUT	% Choice OUT
Deviny ES	359	92	25.6%
Dunstan MS	952	222	23.3%
Foothills ES	371	182	49.1%
Green Mountain ES	225	102	45.3%
Green Mountain HS	1,336	490	36.7%
Hutchinson ES	315	189	60.0%
Rooney Ranch ES	555	175	31.5%
Grand Total	4,113	1,452	35.3%

Jefferson

School	Students	Choice IN	% Choice IN
Edgewater Elementary	332	111	33.4%
Jefferson Junior/Senior High	672	190	28.3%
Lumberg Elementary	365	125	34.2%
Molholm Elementary	289	88	30.4%
Grand Total	1,658	514	31.0%

School	Students	Choice OUT	% Choice OUT
Edgewater ES	323	102	31.6%
Jefferson Jr-Sr HS	801	319	39.8%
Lumberg ES	445	205	46.1%
Molholm ES	329	128	38.9%
Grand Total	1,898	754	39.7%

Lakewood

School	Students	Choice IN	% Choice IN
Belmar Elementary	232	159	68.5%
Creighton Middle	873	299	34.2%
Eiber Elementary	313	40	12.8%
Glennon Heights Elementary	195	95	48.7%
Lakewood High	2,047	1,181	57.7%
Slater Elementary	245	93	38.0%
South Lakewood Elementary	397	169	42.6%
Grand Total	4,302	2,036	47.3%

School	Students	Choice OUT	% Choice OUT
Belmar School of Integrated Arts	218	145	66.5%
Creighton MS	894	320	35.8%
Eiber ES	498	225	45.2%
Glennon Heights ES	197	97	49.2%
Lakewood HS	1,256	390	31.1%
Slater ES	301	149	49.5%
South Lakewood ES	402	174	43.3%
Grand Total	3,766	1,500	39.8%

Pomona

School	Students	Choice IN	% Choice IN
Little Elementary	304	87	28.6%
Moore Middle	583	157	26.9%
Parr Elementary	233	147	63.1%
Pomona High	1,319	646	49.0%
Warder Elementary	319	164	51.4%
Weber Elementary	323	87	26.9%
Grand Total	3,081	1,288	41.8%

School	Students	Choice OUT	% Choice OUT
Little ES	405	188	46.4%
Moore MS	730	304	41.6%
Parr ES	157	71	45.2%
Pomona HS	942	269	28.6%
Warder ES	307	152	49.5%
Weber ES	573	337	58.8%
Grand Total	3,114	1,321	42.4%

2019-20 Choice Reports By Articulation Area

Ralston Valley

School	Students	Choice IN	% Choice IN
Coal Creek Canyon K-8	149	47	31.5%
Meiklejohn Elementary	520	36	6.9%
Oberon Middle	741	130	17.5%
Ralston Valley High	1,845	261	14.1%
Sierra Elementary	476	98	20.6%
Three Creeks K-8	912	68	7.5%
Van Arsdale Elementary	390	170	43.6%
West Woods Elementary	584	134	22.9%
Grand Total	5,617	944	16.8%

School	Students	Choice OUT	% Choice OUT
Coal Creek Canyon K-8	126	24	19.0%
Meiklejohn ES	662	178	26.9%
Oberon MS	907	296	32.6%
Ralston Valley HS	1,926	342	17.8%
Sierra ES	537	159	29.6%
Three Creeks K-8	977	133	13.6%
Van Arsdale ES	311	91	29.3%
West Woods ES	532	82	15.4%
Grand Total	5,978	1,305	21.8%

Standley Lake

School	Students	Choice IN	% Choice IN
Adams Elementary	323	124	38.4%
Lukas Elementary	324	52	16.0%
Mandalay Middle	575	126	21.9%
Ryan Elementary	378	129	34.1%
Semper Elementary	289	111	38.4%
Sheridan Green Elementary	278	116	41.7%
Standley Lake High	1,318	281	21.3%
Wayne Carle Middle	585	58	9.9%
Witt Elementary	250	65	26.0%
Grand Total	4,320	1,062	24.6%

School	Students	Choice OUT	% Choice OUT
Adams ES	359	160	44.6%
Lukas ES	551	279	50.6%
Mandalay MS	658	209	31.8%
Ryan ES	317	68	21.5%
Semper ES	364	186	51.1%
Sheridan Green ES	283	121	42.8%
Standley Lake HS	1,449	412	28.4%
Wayne Carle MS	858	331	38.6%
Witt ES	356	171	48.0%
Grand Total	5,195	1,937	37.3%

Wheat Ridge

School	Students	Choice IN	% Choice IN
Everitt Middle	601	128	21.3%
Kullerstrand Elementary	203	87	42.9%
Maple Grove Elementary	337	86	25.5%
Peak Expeditionary-Pennington	174	85	48.9%
Prospect Valley Elementary	453	254	56.1%
Stevens Elementary	291	105	36.1%
Stober Elementary	250	111	44.4%
Vivian Elementary	111	50	45.0%
Wheat Ridge High	1,183	458	38.7%
Wilmore-Davis Elementary	231	109	47.2%
Grand Total	3,834	1,473	38.4%

School	Students	Choice OUT	% Choice OUT
Everitt MS	974	501	51.4%
Kullerstrand ES	298	182	61.1%
Maple Grove ES	294	43	14.6%
Peak Expeditionary School at Pennington	169	80	47.3%
Prospect Valley ES	287	88	30.7%
Stevens ES	429	243	56.6%
Stober ES	226	87	38.5%
Vivian ES	189	128	67.7%
Wheat Ridge HS	1,119	424	37.9%
Wilmore-Davis ES	276	154	55.8%
Grand Total	4,261	1,930	45.3%

Options

School	Students	Choice IN	% Choice IN
Brady Exploration School	380	380	100.0%
Dennison Elementary	629	629	100.0%
D'Evelyn Junior/Senior	1,036	1,036	100.0%
Free Horizon Montessori	371	371	100.0%
Jeffco Open Elementary	219	219	100.0%
Jeffco Open Secondary	318	318	100.0%
Jeffco Virtual Academy	318	318	100.0%
Long View	48	48	100.0%
Manning	675	675	100.0%
McLain Community High School	395	395	100.0%
Warren Tech Center	42	42	100.0%
Warren Tech North	5	5	100.0%
Grand Total	4,436	4,436	100.0%

Specials

School	Students	Choice IN	% Choice IN
Connections Learning Center	42	42	100.0%
Fletcher Miller Special	64	64	100.0%
Mountview Youth Service Center	23	23	100.0%
Sobesky Academy	123	123	100.0%
Grand Total	252	252	100.0%

2019-20 Choice Reports By Articulation Area

Charters

School	Students	Choice IN	% Choice IN
Addenbrooke Classical Academy	396	396	100.0%
Addenbrooke Classical Grammar	413	413	100.0%
Collegiate Academy	459	459	100.0%
Compass Montessori - Golden	383	383	100.0%
Compass Montessori - Wheat Ridge	229	229	100.0%
Doral Academy of Colorado	194	194	100.0%
Excel Academy	516	516	100.0%
Great Work Montessori	150	150	100.0%
Jefferson Academy	1,051	1,051	100.0%
Jefferson Academy Elementary	749	749	100.0%
Jefferson Academy High School	414	414	100.0%
Lincoln Academy	757	757	100.0%
Montessori Peaks Academy	417	417	100.0%
Mountain Phoenix Community	606	606	100.0%
New America	152	152	100.0%
Rocky Mountain Academy of Evergreen	320	320	100.0%
Rocky Mountain Deaf	58	58	100.0%
Two Roads	635	635	100.0%
Woodrow Wilson Academy	907	907	100.0%
Grand Total	8,806	8,806	100.0%

Percent Change of Pre-K

Artic	2010-11	2011-12	2012-13	2013-14	2014-15	2015-16	2016-17	2017-18	2018-19	2019-20
DW	2913	2967	2978	3041	2934	2948	2925	2968	2932	2796
AL	291	295	284	269	254	210	195	202	166	161
AR	283	289	283	263	251	259	247	225	226	186
AW	57	63	57	55	57	53	91	97	98	88
BC	72	70	76	98	102	117	110	115	137	131
CH	176	161	192	180	175	212	200	189	177	162
CL	184	182	167	178	145	149	147	144	128	130
CN	85	75	67	68	71	76	78	92	90	81
DR	161	150	159	145	123	129	136	144	115	120
EV	157	143	148	150	151	149	149	151	144	126
GL	139	133	110	131	137	137	148	143	173	172
GM	141	152	144	144	148	137	142	134	126	154
JF	152	115	120	157	153	134	137	143	144	122
LK	28	30	29	31	29	29	28	28	28	23
PM	133	120	114	122	121	133	126	159	143	138
RV	141	133	130	139	136	127	65	66	66	61
SL	180	169	170	179	189	198	221	205	210	181
WR	194	232	241	236	219	223	217	220	207	224
OP	28	31	31	28	31	28	32	28	111	112
AS	24	48	37	42	34	20	23	26	27	37
CR	287	376	419	426	408	428	433	457	416	387

2913	2967	2978	3041	2934	2948	2925	2968	2932	2796	Total
	1.854%	0.371%	2.116%	-3.519%	0.477%	-0.780%	1.470%	-1.213%	-4.638%	% change
	-54	-11	-63	107	-14	23	-43	36	136	Difference

	Historical Enrollment									
Alameda	2010-11	2011-12	2012-13	2013-14	2014-15	2015-16	2016-17	2017-18	2018-19	2019-20
Pre-K	291	295	284	269	254	210	195	202	166	161
K	381	369	397	371	328	317	303	299	242	236
1	382	366	376	411	347	335	311	310	248	234
2	393	365	350	385	401	355	353	287	262	249
3	376	399	367	362	358	386	356	346	243	272
4	402	378	380	361	348	346	402	349	279	255
5	294	394	372	393	345	327	342	390	279	299
6	344	322	392	367	389	347	341	342	290	300
7	267	269	241	261	202	265	197	211	206	233
8	219	279	268	237	249	194	278	205	204	192
9	211	230	266	232	197	221	199	262	191	180
10	186	208	212	260	215	185	198	191	220	172
11	183	174	200	200	237	200	178	181	162	201
12	159	170	154	191	184	217	189	149	156	139
Total	4,088	4,218	4,259	4,300	4,054	3,905	3,842	3,724	3,148	3,123

	Historical Enrollment									
Arvada	2010-11	2011-12	2012-13	2013-14	2014-15	2015-16	2016-17	2017-18	2018-19	2019-20
Pre-K	283	289	283	263	251	259	247	225	226	186
K	521	486	510	511	471	466	453	473	419	415
1	482	535	495	520	510	475	449	433	428	409
2	490	473	514	485	520	522	435	432	409	412
3	466	490	477	502	467	503	481	436	415	390
4	497	457	474	460	491	478	491	479	433	406
5	522	493	416	453	462	484	464	464	477	421
6	483	503	484	414	451	468	461	444	393	370
7	392	404	371	378	341	380	374	359	333	361
8	357	393	384	357	383	344	367	359	351	322
9	250	250	238	258	244	263	167	210	201	212
10	287	249	237	249	249	241	248	180	224	190
11	277	257	209	208	224	232	222	232	182	199
12	225	237	226	191	179	201	199	200	198	167
Total	5,532	5,516	5,318	5,249	5,243	5,316	5,058	4,926	4,689	4,460

	Historical Enrollment									
Arvada West	2010-11	2011-12	2012-13	2013-14	2014-15	2015-16	2016-17	2017-18	2018-19	2019-20
Pre-K	57	63	57	55	57	53	91	97	98	88
K	337	312	305	321	332	251	300	342	292	310
1	335	341	302	333	330	331	273	306	341	285
2	347	334	330	309	352	323	324	277	314	335
3	331	345	323	332	305	353	311	328	282	312
4	327	342	341	342	340	316	335	319	309	278
5	344	326	350	348	341	342	322	330	328	323
6	335	345	338	356	341	330	330	308	279	328
7	373	327	362	312	348	338	324	344	306	277
8	339	377	339	357	308	347	352	329	338	315
9	428	444	434	432	457	479	453	450	452	496
10	429	430	429	422	451	446	452	459	437	431
11	443	417	443	418	432	418	440	432	441	434
12	426	402	379	427	406	408	395	427	447	440
Total	4,851	4,805	4,732	4,764	4,800	4,735	4,702	4,748	4,664	4,652

	Historical Enrollment									
Bear Creek	2010-11	2011-12	2012-13	2013-14	2014-15	2015-16	2016-17	2017-18	2018-19	2019-20
Pre-K	72	70	76	98	102	117	110	115	137	131
K	398	412	417	407	404	387	369	325	368	421
1	450	416	427	428	442	405	397	392	394	362
2	428	437	399	422	413	433	412	394	424	392
3	411	434	454	421	416	396	419	398	451	430
4	446	415	413	456	416	418	393	413	447	438
5	428	438	413	411	450	404	400	385	480	435
6	491	454	432	426	418	421	389	393	384	384
7	431	452	409	407	389	388	407	389	389	391
8	483	432	465	399	408	407	373	387	383	372
9	512	505	482	448	418	435	399	411	419	412
10	513	471	468	439	422	403	430	385	386	409
11	474	490	444	432	423	404	397	394	347	349
12	394	433	453	413	409	392	368	374	378	344
Total	5,931	5,859	5,752	5,607	5,530	5,410	5,263	5,155	5,387	5,270

	Historical Enrollment									
Chatfield	2010-11	2011-12	2012-13	2013-14	2014-15	2015-16	2016-17	2017-18	2018-19	2019-20
Pre-K	176	161	192	180	175	212	200	189	177	162
K	435	413	440	439	454	404	419	427	416	420
1	490	473	458	460	464	463	408	430	418	411
2	483	490	485	477	466	462	464	433	432	427
3	524	506	505	490	492	475	461	482	438	450
4	506	539	510	509	502	477	477	482	490	435
5	560	501	550	525	516	494	486	498	477	490
6	549	549	498	541	561	559	530	548	580	513
7	516	509	513	483	519	500	560	523	563	568
8	547	500	505	502	482	518	487	565	518	565
9	443	509	460	437	470	431	451	477	496	476
10	490	450	516	468	435	473	421	445	473	489
11	483	480	420	484	472	439	444	420	424	463
12	508	488	463	417	486	468	421	434	418	414
Total	6,710	6,568	6,515	6,412	6,494	6,375	6,229	6,353	6,320	6,283

	Historical Enrollment									
Conifer	2010-11	2011-12	2012-13	2013-14	2014-15	2015-16	2016-17	2017-18	2018-19	2019-20
Pre-K	85	75	67	68	71	76	78	92	90	81
K	144	118	133	122	130	137	127	153	143	139
1	131	138	131	154	141	142	140	144	135	159
2	160	119	140	138	166	152	143	164	164	138
3	154	163	137	146	148	173	149	153	150	158
4	160	158	165	141	158	165	174	159	152	148
5	172	149	164	177	141	160	161	191	168	155
6	190	187	175	194	198	159	184	182	211	187
7	164	181	187	181	186	199	164	189	176	219
8	216	163	184	199	178	194	202	163	186	166
9	203	220	196	210	213	198	224	239	200	227
10	238	211	220	188	213	207	209	223	232	207
11	215	233	215	216	183	201	196	215	216	230
12	258	192	232	211	205	175	204	202	209	209
Total	2,490	2,307	2,346	2,345	2,331	2,338	2,355	2,469	2,432	2,423

	Historical Enrollment									
Columbine	2010-11	2011-12	2012-13	2013-14	2014-15	2015-16	2016-17	2017-18	2018-19	2019-20
Pre-K	184	182	167	178	145	149	147	144	128	130
K	301	285	294	280	285	278	266	269	237	256
1	326	282	271	290	274	280	263	257	263	222
2	308	315	277	273	291	280	283	249	264	262
3	319	302	328	280	272	299	288	291	241	268
4	312	305	294	342	283	281	286	271	298	244
5	325	312	302	299	325	285	281	281	263	305
6	312	325	316	291	294	310	278	273	273	292
7	312	321	330	332	323	323	363	333	273	302
8	296	310	314	326	329	331	332	357	333	284
9	385	405	428	437	420	425	484	394	453	437
10	419	388	418	433	445	406	428	473	389	466
11	442	406	400	424	429	425	392	435	444	402
12	376	433	388	381	396	408	404	389	411	440
Total	4,617	4,571	4,527	4,566	4,511	4,480	4,495	4,416	4,270	4,310

	Historical Enrollment									
Dakota Ridge	2010-11	2011-12	2012-13	2013-14	2014-15	2015-16	2016-17	2017-18	2018-19	2019-20
Pre-K	161	150	159	145	123	129	136	144	115	120
K	327	286	347	309	291	261	296	265	330	310
1	327	347	291	357	315	310	293	300	273	345
2	329	316	352	280	344	314	323	283	292	288
3	327	314	322	352	296	344	340	327	301	314
4	349	329	319	318	360	290	347	341	329	310
5	318	346	338	329	331	359	316	341	342	337
6	330	319	344	339	333	317	342	316	307	387
7	404	373	373	386	396	395	330	354	343	290
8	418	412	375	367	396	403	395	339	353	342
9	391	399	394	397	386	408	391	411	349	382
10	367	382	399	390	398	362	394	390	391	347
11	397	361	372	391	382	373	376	388	363	363
12	349	376	340	363	374	366	366	364	366	355
Total	4,794	4,710	4,725	4,723	4,725	4,631	4,645	4,563	4,454	4,490

	Historical Enrollment									
Evergreen	2010-11	2011-12	2012-13	2013-14	2014-15	2015-16	2016-17	2017-18	2018-19	2019-20
Pre-K	157	143	148	150	151	149	149	151	144	126
K	164	139	162	148	179	160	162	156	170	177
1	165	179	155	181	162	188	183	178	161	175
2	215	169	195	155	206	173	198	201	179	172
3	193	218	184	193	178	204	194	213	203	187
4	220	201	228	195	208	182	233	205	223	215
5	207	227	210	240	205	224	206	239	214	223
6	222	202	223	215	264	211	256	208	257	220
7	215	239	220	238	225	267	229	275	218	254
8	270	216	237	215	228	234	282	239	267	216
9	222	271	273	272	259	279	285	302	259	292
10	255	219	279	257	255	284	271	286	301	251
11	280	251	213	273	240	257	276	266	266	294
12	214	276	246	212	259	238	253	262	249	259
Total	2,999	2,950	2,973	2,944	3,019	3,050	3,177	3,181	3,111	3,061

	Historical Enrollment									
Golden	2010-11	2011-12	2012-13	2013-14	2014-15	2015-16	2016-17	2017-18	2018-19	2019-20
Pre-K	139	133	110	131	137	137	148	143	173	172
K	358	366	382	378	326	354	329	325	336	327
1	350	393	408	385	397	340	351	334	336	330
2	405	353	401	382	367	378	336	355	341	336
3	336	412	361	382	378	355	385	327	340	328
4	312	355	419	338	378	355	349	375	334	347
5	377	316	357	415	331	371	354	333	363	336
6	322	371	297	325	395	338	380	382	302	326
7	259	223	277	237	257	356	289	330	307	298
8	246	276	235	273	223	258	350	275	317	303
9	328	333	343	319	362	313	353	380	340	379
10	297	318	340	311	299	355	313	342	380	327
11	336	272	321	347	305	297	333	292	328	357
12	315	326	247	301	335	285	262	313	278	309
Total	4,380	4,447	4,498	4,524	4,490	4,492	4,532	4,506	4,475	4,475

	Historical Enrollment									
Green Mountain	2010-11	2011-12	2012-13	2013-14	2014-15	2015-16	2016-17	2017-18	2018-19	2019-20
Pre-K	141	152	144	144	148	137	142	134	126	154
K	294	290	298	286	279	276	267	266	286	291
1	288	312	296	314	302	283	273	276	276	283
2	318	297	309	313	317	304	282	290	273	276
3	307	316	307	305	324	318	305	290	282	281
4	279	298	316	318	317	325	328	307	284	285
5	286	277	302	325	322	319	339	325	297	295
6	306	289	291	317	332	319	310	333	314	301
7	296	314	310	293	308	312	331	306	325	316
8	309	287	332	304	307	314	304	328	306	324
9	284	293	278	305	301	288	308	299	285	294
10	301	287	280	271	304	295	270	306	287	292
11	335	277	273	271	256	303	284	251	291	271
12	331	308	273	254	255	240	280	252	243	268
Total	4,075	3,997	4,009	4,020	4,072	4,033	4,023	3,963	3,875	3,931

	Historical Enrollment									
Jefferson	2010-11	2011-12	2012-13	2013-14	2014-15	2015-16	2016-17	2017-18	2018-19	2019-20
Pre-K	152	115	120	157	153	134	137	143	144	122
K	253	229	235	242	196	203	168	172	144	134
1	269	201	204	229	248	192	184	151	143	137
2	248	205	207	214	228	220	175	182	140	128
3	210	186	196	215	217	200	221	160	163	121
4	199	175	174	208	210	189	200	211	153	143
5	186	160	157	167	195	194	181	191	208	149
6	184	138	149	144	175	198	178	173	188	174
7	0	0	0	0	0	139	166	127	132	133
8	0	0	0	0	0	132	138	147	123	119
9	189	157	131	132	113	107	114	114	144	122
10	157	186	139	137	124	112	105	113	94	137
11	158	136	159	132	129	113	88	97	95	82
12	94	116	122	166	123	128	108	78	78	79
Total	2,299	2,004	1,993	2,143	2,111	2,261	2,163	2,059	1,949	1,780

	Historical Enrollment									
Lakewood	2010-11	2011-12	2012-13	2013-14	2014-15	2015-16	2016-17	2017-18	2018-19	2019-20
Pre-K	28	30	29	31	29	29	28	28	28	23
K	269	281	272	267	297	301	271	248	241	197
1	258	261	282	244	265	270	276	262	247	235
2	312	248	257	268	237	242	243	263	258	220
3	268	299	249	230	263	241	254	234	257	262
4	251	246	311	244	223	260	243	235	225	246
5	299	250	245	287	233	223	256	229	230	223
6	272	293	248	236	305	232	232	255	280	264
7	339	357	355	329	332	381	323	315	316	293
8	331	339	364	356	345	324	366	321	313	318
9	531	529	531	589	569	549	530	597	527	524
10	545	525	531	527	574	556	545	516	586	524
11	500	517	495	492	510	519	530	509	479	546
12	431	481	482	477	471	475	511	506	499	452
Total	4,634	4,656	4,651	4,577	4,653	4,602	4,608	4,518	4,486	4,327

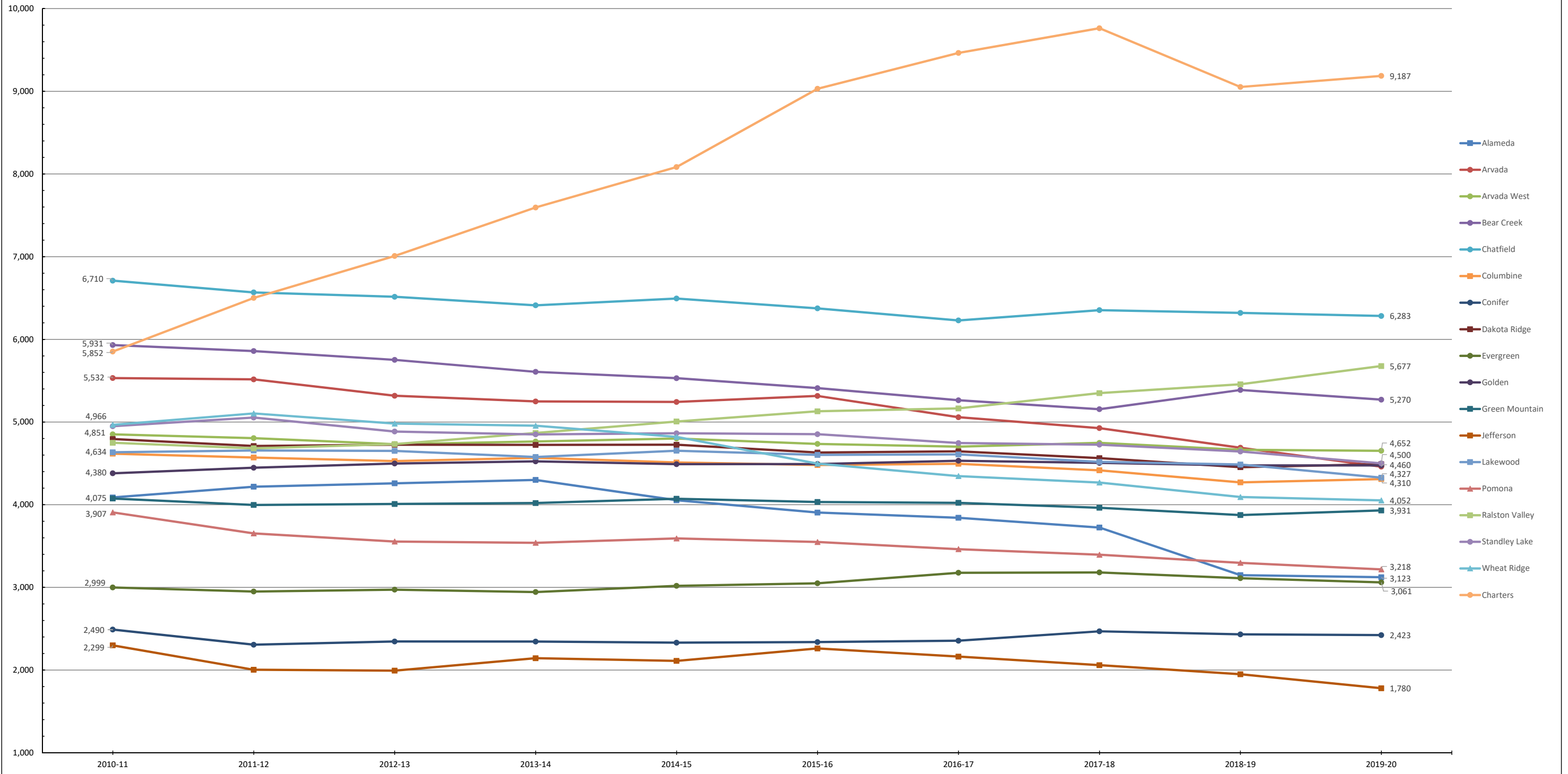
	Historical Enrollment									
Pomona	2010-11	2011-12	2012-13	2013-14	2014-15	2015-16	2016-17	2017-18	2018-19	2019-20
Pre-K	133	120	114	122	121	133	126	159	143	138
K	256	216	223	222	264	215	212	184	205	234
1	252	217	202	209	234	247	202	210	178	202
2	208	229	215	199	223	220	233	191	204	182
3	260	195	222	200	209	211	218	208	186	193
4	229	232	191	213	208	196	200	222	209	170
5	273	211	233	195	214	198	173	199	230	199
6	243	239	208	234	191	209	194	169	203	214
7	269	250	255	242	241	173	219	204	189	203
8	235	266	247	259	240	248	168	220	214	166
9	403	339	385	392	402	387	414	349	377	332
10	410	401	321	387	372	394	383	396	319	365
11	366	387	381	314	382	369	389	347	350	294
12	370	351	358	351	291	349	331	337	290	326
Total	3,907	3,653	3,555	3,539	3,592	3,549	3,462	3,395	3,297	3,218

	Historical Enrollment									
Ralston Valley	2010-11	2011-12	2012-13	2013-14	2014-15	2015-16	2016-17	2017-18	2018-19	2019-20
Pre-K	141	133	130	139	136	127	65	66	66	61
K	270	307	265	309	341	301	361	387	413	457
1	339	284	336	315	359	375	339	412	430	429
2	338	344	303	351	319	399	399	353	439	452
3	308	340	355	314	358	355	418	428	389	450
4	332	325	347	361	332	395	384	453	438	415
5	346	340	329	373	351	359	407	411	465	453
6	326	358	355	347	383	384	380	434	360	376
7	296	282	301	307	285	316	280	280	348	378
8	387	294	289	303	315	291	311	275	285	363
9	425	455	458	460	504	427	445	473	487	467
10	428	413	452	455	455	505	440	446	470	491
11	410	414	409	437	443	450	495	437	433	464
12	403	393	404	396	425	446	441	494	433	421
Total	4,749	4,682	4,733	4,867	5,006	5,130	5,165	5,349	5,456	5,677

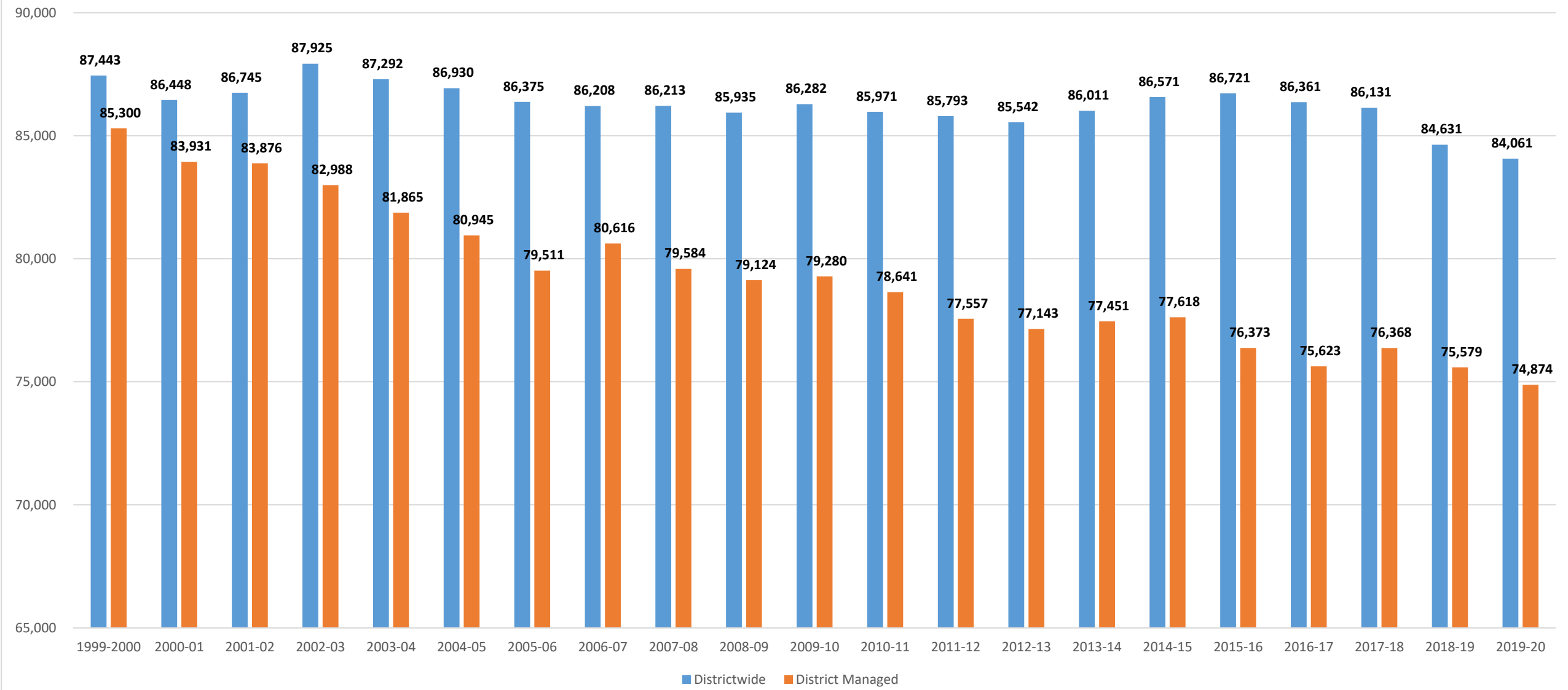
	Historical Enrollment									
Standley Lake	2010-11	2011-12	2012-13	2013-14	2014-15	2015-16	2016-17	2017-18	2018-19	2019-20
Pre-K	180	169	170	179	189	198	221	205	210	181
K	355	381	375	347	337	304	295	316	307	297
1	354	369	364	384	392	353	323	304	320	305
2	377	374	343	350	383	375	322	337	290	307
3	371	387	355	354	371	392	372	324	330	296
4	389	382	356	352	357	377	391	350	320	329
5	363	396	372	369	372	340	353	396	334	308
6	348	379	386	349	353	369	341	330	415	372
7	358	388	404	407	398	420	420	385	382	407
8	375	359	369	413	422	408	405	420	385	380
9	393	389	332	317	346	381	332	347	354	328
10	381	380	373	321	312	343	378	333	347	355
11	354	360	360	362	314	302	315	372	307	327
12	351	341	326	346	318	291	278	307	342	308
Total	4,949	5,054	4,885	4,850	4,864	4,853	4,746	4,726	4,643	4,500

	Historical Enrollment									
Wheat Ridge	2010-11	2011-12	2012-13	2013-14	2014-15	2015-16	2016-17	2017-18	2018-19	2019-20
Pre-K	194	232	241	236	219	223	217	220	207	224
K	386	350	380	351	376	374	312	303	357	378
1	376	379	350	364	358	372	379	309	303	345
2	396	392	364	342	374	357	369	356	327	312
3	354	426	377	364	349	365	346	359	360	326
4	374	368	423	389	352	349	367	328	350	346
5	363	391	376	433	390	353	346	381	329	342
6	386	399	398	371	396	370	332	325	236	176
7	424	384	382	409	329	241	227	219	225	224
8	392	450	382	388	403	184	241	218	195	200
9	376	336	371	364	376	353	284	365	326	302
10	345	381	317	349	330	359	338	277	330	333
11	304	323	343	291	308	324	321	303	259	305
12	296	293	277	304	260	273	267	305	289	239
Total	4,966	5,104	4,981	4,955	4,820	4,497	4,346	4,268	4,093	4,052

10-Year Trend of Jeffco Articulation Areas



Jeffco Public Schools Historical Enrollment



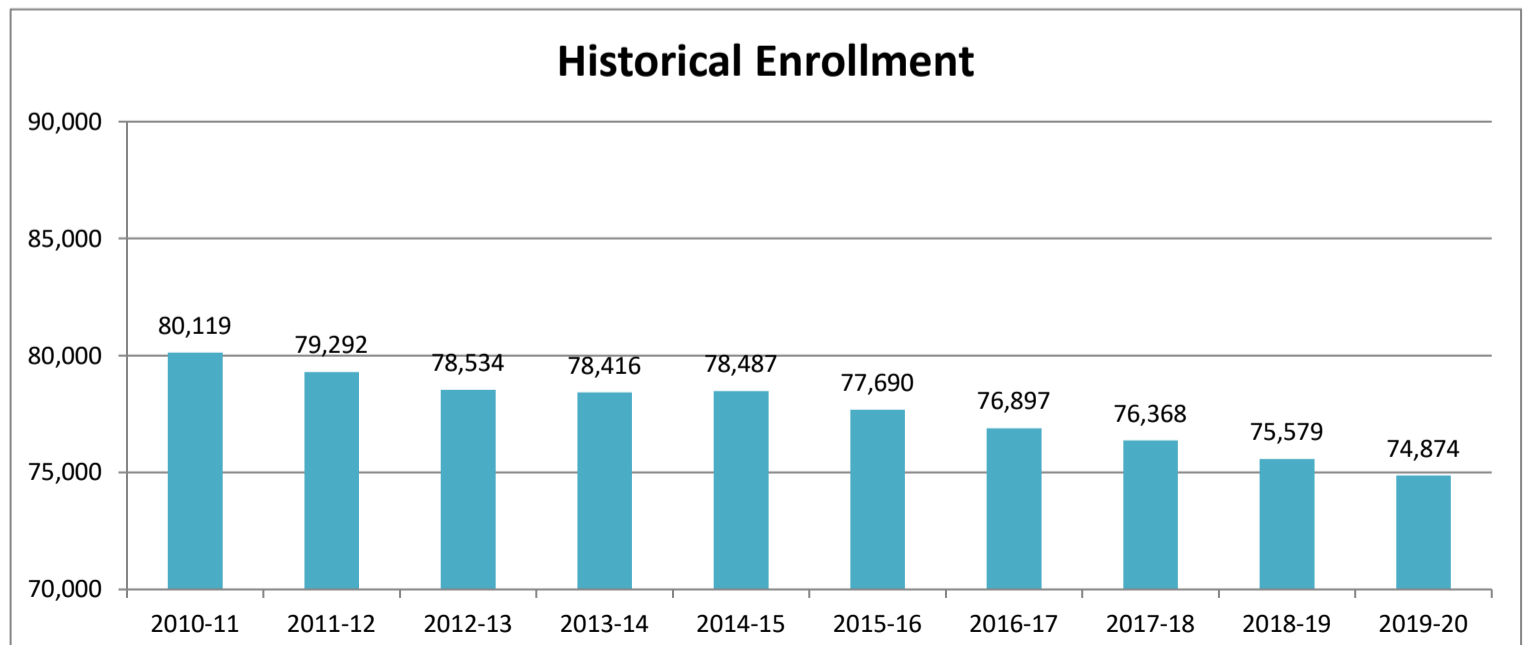
District Managed

Historical Enrollment										
	2010-11	2011-12	2012-13	2013-14	2014-15	2015-16	2016-17	2017-18	2018-19	2019-20
Pre-K	2,626	2,591	2,559	2,615	2,526	2,520	2,492	2,511	2,516	2,409
K	5,566	5,363	5,563	5,430	5,424	5,117	5,035	5,033	5,085	5,173
1	5,703	5,608	5,471	5,701	5,663	5,488	5,170	5,135	5,076	5,048
2	5,874	5,586	5,560	5,468	5,736	5,633	5,418	5,174	5,183	5,064
3	5,644	5,853	5,649	5,563	5,525	5,702	5,640	5,426	5,214	5,210
4	5,709	5,635	5,783	5,673	5,605	5,523	5,723	5,625	5,441	5,198
5	5,796	5,660	5,618	5,859	5,655	5,568	5,510	5,714	5,654	5,456
6	5,778	5,809	5,660	5,594	5,916	5,668	5,592	5,556	5,663	5,602
7	5,788	5,768	5,794	5,694	5,600	5,903	5,708	5,635	5,564	5,675
8	5,923	5,846	5,811	5,799	5,751	5,652	5,885	5,674	5,619	5,508
9	6,262	6,377	6,285	6,296	6,332	6,230	6,152	6,371	6,190	6,144
10	6,418	6,248	6,305	6,229	6,233	6,288	6,133	6,082	6,215	6,167
11	6,645	6,394	6,193	6,253	6,205	6,148	6,187	6,049	5,886	6,070
12	6,387	6,554	6,283	6,242	6,316	6,250	6,252	6,383	6,273	6,150
Total	80,119	79,292	78,534	78,416	78,487	77,690	76,897	76,368	75,579	74,874

Source: Jeffco Public Schools - Instructional Data Reporting

Historical Enrollment										
	2010-11	2011-12	2012-13	2013-14	2014-15	2015-16	2016-17	2017-18	2018-19	2019-20
Alameda	4,088	4,218	4,259	4,300	4,054	3,905	3,842	3,724	3,148	3,123
Arvada	5,532	5,516	5,318	5,249	5,243	5,316	5,058	4,926	4,689	4,460
Arvada West	4,851	4,805	4,732	4,764	4,800	4,735	4,702	4,748	4,664	4,652
Bear Creek	5,931	5,859	5,752	5,607	5,530	5,410	5,263	5,155	5,387	5,270
Chatfield	6,710	6,568	6,515	6,412	6,494	6,375	6,229	6,353	6,320	6,283
Columbine	4,617	4,571	4,527	4,566	4,511	4,480	4,495	4,416	4,270	4,310
Conifer	2,490	2,307	2,346	2,345	2,331	2,338	2,355	2,469	2,432	2,423
Dakota Ridge	4,794	4,710	4,725	4,723	4,725	4,631	4,645	4,563	4,454	4,490
Evergreen	2,999	2,950	2,973	2,944	3,019	3,050	3,177	3,181	3,111	3,061
Golden	4,380	4,447	4,498	4,524	4,490	4,492	4,532	4,506	4,475	4,475
Green Mountain	4,075	3,997	4,009	4,020	4,072	4,033	4,023	3,963	3,875	3,931
Jefferson	2,299	2,004	1,993	2,143	2,111	2,261	2,163	2,059	1,949	1,780
Lakewood	4,634	4,656	4,651	4,577	4,653	4,602	4,608	4,518	4,486	4,327
Pomona	3,907	3,653	3,555	3,539	3,592	3,549	3,462	3,395	3,297	3,218
Ralston Valley	4,749	4,682	4,733	4,867	5,006	5,130	5,165	5,349	5,456	5,677
Standley Lake	4,949	5,054	4,885	4,850	4,864	4,853	4,746	4,726	4,643	4,500
Wheat Ridge	4,966	5,104	4,981	4,955	4,820	4,497	4,346	4,268	4,093	4,052
Options	3,778	3,800	3,811	3,790	3,927	3,816	3,849	3,793	4,568	4,545
Specials	370	391	271	241	245	217	237	256	262	297
Total	80,119	79,292	78,534	78,416	78,487	77,690	76,897	76,368	75,579	74,874
		-827	-758	-118	71	-797	-793	-529	-789	-705

Source: Jeffco Public Schools - Instructional Data Reporting



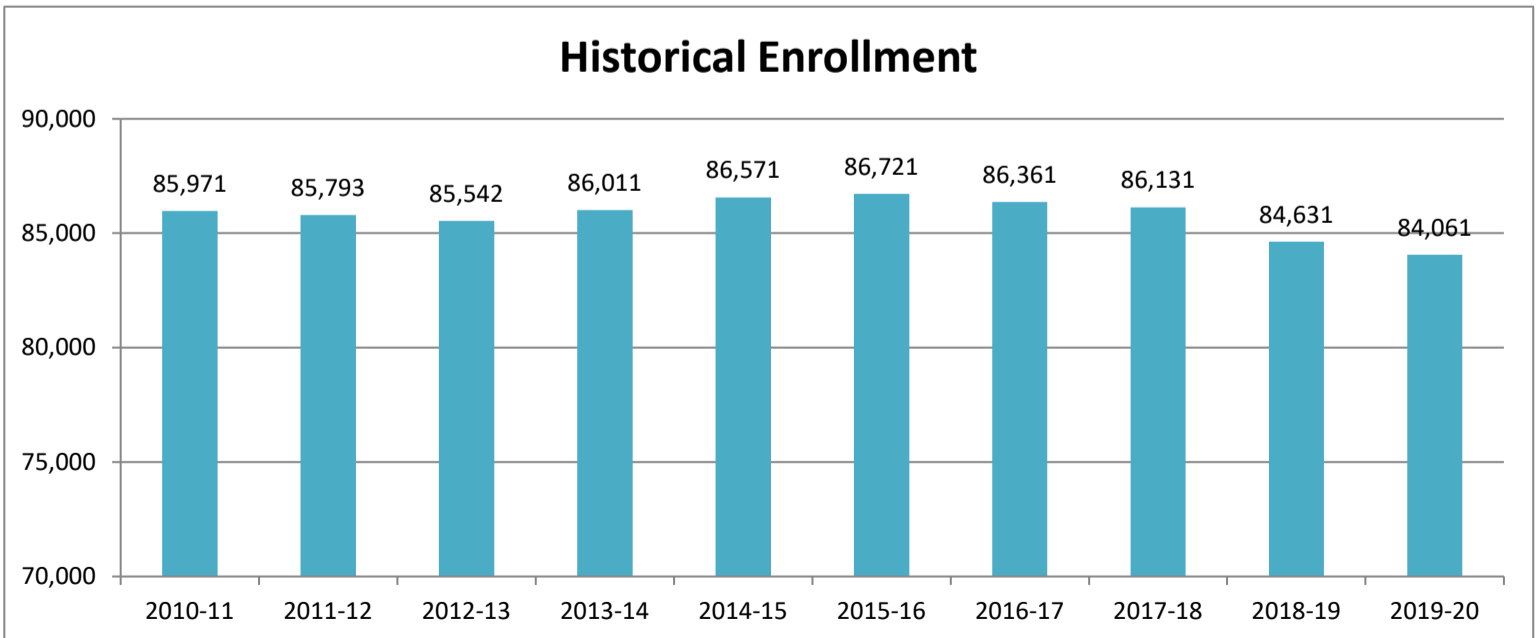
Districtwide

Historical Enrollment										
	2010-11	2011-12	2012-13	2013-14	2014-15	2015-16	2016-17	2017-18	2018-19	2019-20
Pre-K	2,913	2,967	2,978	3,041	2,934	2,948	2,925	2,968	2,932	2,796
K	6,085	5,940	6,204	6,119	6,175	5,958	5,934	5,961	5,903	6,036
1	6,255	6,225	6,107	6,426	6,409	6,358	6,060	6,088	5,888	5,878
2	6,445	6,198	6,211	6,168	6,499	6,476	6,334	6,095	6,034	5,893
3	6,181	6,463	6,278	6,248	6,272	6,544	6,549	6,370	6,039	6,044
4	6,248	6,231	6,445	6,342	6,327	6,358	6,568	6,541	6,317	6,000
5	6,314	6,216	6,235	6,534	6,357	6,373	6,355	6,588	6,490	6,328
6	6,278	6,337	6,226	6,235	6,594	6,429	6,424	6,392	6,449	6,474
7	6,202	6,239	6,308	6,237	6,208	6,579	6,405	6,362	6,277	6,411
8	6,304	6,279	6,283	6,335	6,305	6,291	6,538	6,364	6,301	6,206
9	6,493	6,619	6,550	6,610	6,647	6,581	6,517	6,739	6,524	6,547
10	6,644	6,501	6,579	6,511	6,578	6,665	6,510	6,455	6,579	6,497
11	6,892	6,650	6,473	6,573	6,520	6,496	6,559	6,426	6,240	6,432
12	6,717	6,928	6,665	6,632	6,746	6,665	6,683	6,782	6,658	6,519
Total	85,971	85,793	85,542	86,011	86,571	86,721	86,361	86,131	84,631	84,061

Source: Jeffco Public Schools - Instructional Data Reporting

Historical Enrollment										
	2010-11	2011-12	2012-13	2013-14	2014-15	2015-16	2016-17	2017-18	2018-19	2019-20
Alameda	4,088	4,218	4,259	4,300	4,054	3,905	3,842	3,724	3,148	3,123
Arvada	5,532	5,516	5,318	5,249	5,243	5,316	5,058	4,926	4,689	4,460
Arvada West	4,851	4,805	4,732	4,764	4,800	4,735	4,702	4,748	4,664	4,652
Bear Creek	5,931	5,859	5,752	5,607	5,530	5,410	5,263	5,155	5,387	5,270
Chatfield	6,710	6,568	6,515	6,412	6,494	6,375	6,229	6,353	6,320	6,283
Columbine	4,617	4,571	4,527	4,566	4,511	4,480	4,495	4,416	4,270	4,310
Conifer	2,490	2,307	2,346	2,345	2,331	2,338	2,355	2,469	2,432	2,423
Dakota Ridge	4,794	4,710	4,725	4,723	4,725	4,631	4,645	4,563	4,454	4,490
Evergreen	2,999	2,950	2,973	2,944	3,019	3,050	3,177	3,181	3,111	3,061
Golden	4,380	4,447	4,498	4,524	4,490	4,492	4,532	4,506	4,475	4,475
Green Mountain	4,075	3,997	4,009	4,020	4,072	4,033	4,023	3,963	3,875	3,931
Jefferson	2,299	2,004	1,993	2,143	2,111	2,261	2,163	2,059	1,949	1,780
Lakewood	4,634	4,656	4,651	4,577	4,653	4,602	4,608	4,518	4,486	4,327
Pomona	3,907	3,653	3,555	3,539	3,592	3,549	3,462	3,395	3,297	3,218
Ralston Valley	4,749	4,682	4,733	4,867	5,006	5,130	5,165	5,349	5,456	5,677
Standley Lake	4,949	5,054	4,885	4,850	4,864	4,853	4,746	4,726	4,643	4,500
Wheat Ridge	4,966	5,104	4,981	4,955	4,820	4,497	4,346	4,268	4,093	4,052
Options	3,778	3,800	3,811	3,790	3,927	3,816	3,849	3,793	4,568	4,545
Charters	5,852	6,501	7,008	7,595	8,084	9,031	9,464	9,763	9,052	9,187
Specials	370	391	271	241	245	217	237	256	262	297
Jeffco Subtotal	80,119	79,292	78,534	78,416	78,487	77,690	76,897	76,368	75,579	74,874
Charter Subtotal	5,852	6,501	7,008	7,595	8,084	9,031	9,464	9,763	9,052	9,187
Total	85,971	85,793	85,542	86,011	86,571	86,721	86,361	86,131	84,631	84,061
		-178	-251	469	560	150	-360	-230	-1,500	-570

Source: Jeffco Public Schools - Instructional Data Reporting



2018 BOND PROGRAM COMMUNICATIONS UPDATE CAPITAL ASSET ADVISORY COMMITTEE JANUARY 2020

COMPLETED WORK:

- Wrote and published year in review piece:
 - Shared in Dec. Chalk talk and posted on Jeffcobuilds.org
- Launched all articulation pages
- Held Kendrick Lakes Groundbreaking event
 - Media Coverage: [CBS Channel 4](#)
- Supported the team in Dec. 9 stocktake presentation

Website analytics:

Dates: Dec. 5 - Jan. 7

Jeffcobuilds.org and all pages with "jeffcobuilds" in the URL (ie sub-pages)

Pageviews: 2,023

Unique page views: 1,547

UPCOMING WORK:

- Finishing tool-kit for school leaders
- Plan upcoming celebratory events for big construction projects
- Switching out featured projects on Jeffcobuilds homepage
- Adding featured projects and highlights to articulation pages

